

Knowledge Organiser

Year Group	Subject	Topic
3	Geography	Water Cycle & Compass Direction

The Big Picture

Water is one of Earth's most important natural resources. Water is constantly moving around our planet in a process called the water cycle. The sun heats water causing evaporation, water vapour cools and condenses into clouds, then falls as precipitation before returning to rivers, lakes and oceans through run-off.

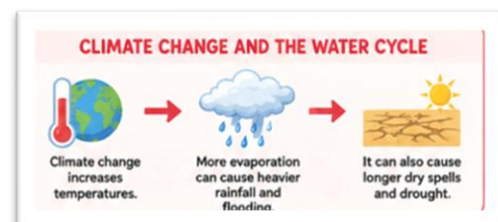
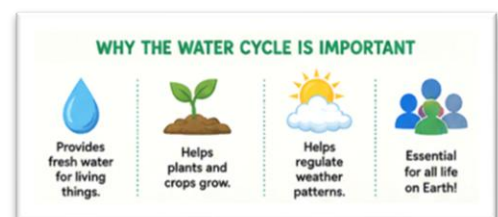
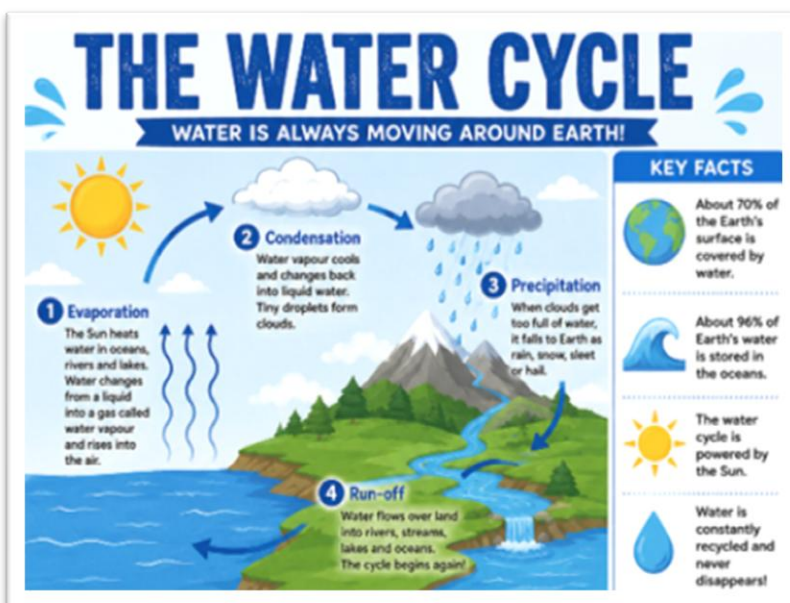
Enquiry Question

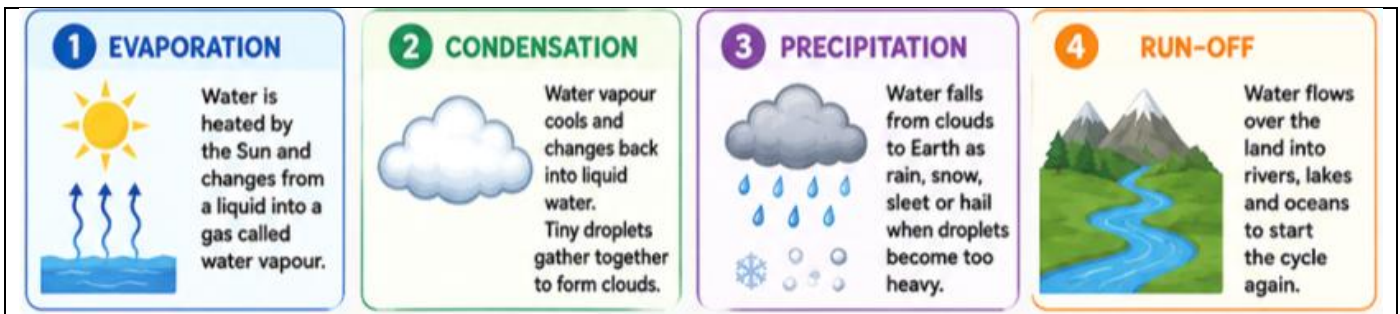
- Why do we need water and where can we find it?
- What are evaporation and condensation?
- What are precipitation and run-off?
- How does the water cycle affect people, plants and animals?
- How can climate change affect the water cycle?

Key Vocabulary

Water Cycle – The continuous movement of water around Earth.
Evaporation – Water changing from liquid to gas.
Condensation – Water vapour cooling into liquid water.
Precipitation – Rain, snow, sleet or hail falling from clouds.
Run-off – Water flowing back into rivers, lakes and oceans.
Climate Change – Long-term changes to Earth's climate.
Flooding – When water covers land that is usually dry.
Drought – A long period with little or no rainfall.
River – A natural flow of water moving towards the sea.
Ocean – A very large body of salt water.

Core Knowledge






Sticky Knowledge

- The Sun powers the water cycle.
- The four stages are evaporation, condensation, precipitation and run-off.
- Water is constantly recycled.
- Climate change can cause more flooding and droughts.
- The water cycle is essential for life on Earth.

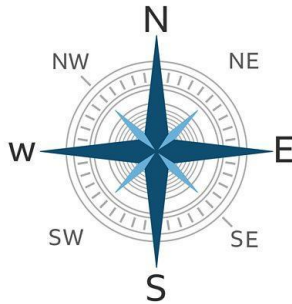
Important Vocabulary

Compass- an instrument for finding directions
 Cardinal points – (4 basic points on a compass)
 North, East, South and West
 Grid reference – a way of finding or locating a point/place on a map
 Ordnance map – a map showing the main features in an area – river, mountain, lake, park, motorway, school, hospital...

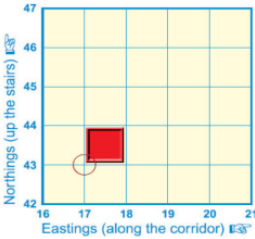


Compass

A compass is used to help people navigate. It points North in the direction of the Earth's magnetic North Pole.



A 4-figure grid reference is used to help the map reader to navigate their way around. OS maps are covered in a series of blue grid lines and these help people to pinpoint an exact location on the map. (17,43)
 To read the grid reference people should read the eastings first (along the corridor) and then the northings (up the stairs)



Compass directions and maps

Which direction would you walk to get from the:

1. Bakery to the police station?
2. Hospital to the church?
3. Church to the bus stop?

